

---

Fractal Technologies

# FracSIS Installation Guide

Version 5.1



[www.fractaltechnologies.com](http://www.fractaltechnologies.com)



# Contents

|                                                   |           |
|---------------------------------------------------|-----------|
| <b>About this Manual</b>                          | <b>1</b>  |
| Typographic Conventions .....                     | 2         |
| Copyright .....                                   | 3         |
| <b>Installation</b>                               | <b>5</b>  |
| Installation: Introduction .....                  | 6         |
| Network environment .....                         | 6         |
| Stand-alone environment .....                     | 8         |
| Prerequisites .....                               | 10        |
| System requirements for FracSIS 5.x .....         | 10        |
| Prerequisites: FracSIS database server .....      | 11        |
| Prerequisites: FracSIS data management only ..... | 11        |
| Getting started .....                             | 12        |
| Installing FracSIS .....                          | 12        |
| Installing ObjectStore .....                      | 13        |
| Licensing your FracSIS software .....             | 15        |
| Finding the HostID of the computer .....          | 16        |
| Installing a stand-alone license .....            | 18        |
| Installing a 'floating pool' of licenses .....    | 19        |
| Fractal dongles .....                             | 19        |
| Upgrading your database from v3.x or v4.x .....   | 22        |
| Troubleshooting installation issues .....         | 23        |
| <b>Index</b>                                      | <b>25</b> |





SECTION 1

# About this Manual

## In This Section

---

|                              |   |
|------------------------------|---|
| Typographic Conventions..... | 2 |
| Copyright .....              | 3 |






# Typographic Conventions

## Text

- Menu paths and menu items are separated by > (for example, **File > Open**).
- Command buttons (for example, **OK, Cancel**) are in **bold**.
- Field names are in **bold**.
- Information you have to type is in `monospace Courier`.
- Key presses are in `SMALL CAPS`. If you have to press more than one key at a time, a plus (+) sign shows this. For example, `SHIFT+TAB`. Rarely would you press both keys at exactly the same time - usually, you would press the first key and hold it down as you press the second key.
- "Click" means that you should press the primary mouse button (the button used for most operations). For right-handed users, this is the left mouse button.
- "Double-click" means that you should press the primary mouse button twice, in quick succession.
- "Right-click" means that you should press the secondary mouse button (the button used for auxiliary operations). For right-handed users, this is the right mouse button.

## Graphics

|                                                                                     |                                                                                                                                                                                                                                                                                         |
|-------------------------------------------------------------------------------------|-----------------------------------------------------------------------------------------------------------------------------------------------------------------------------------------------------------------------------------------------------------------------------------------|
|  | <b>Note:</b> Take particular note of this information - it may be of special interest, contain further or related information, or provide information that doesn't fit well into the flow of the text.                                                                                  |
|  | <b>Warning or caution:</b> Take care when performing this operation or procedure - if you don't follow the information correctly, it may result in damage to people, goods, or data; alternatively, the information may be complex or only able to be carried out by certain personnel. |
|  | <b>Hint or Tip:</b> Information that can make you more efficient or save you time. It may contain ideas for shortcuts or alternate ways of accomplishing tasks, or discuss techniques that aren't immediately obvious.                                                                  |

## Spelling

We use Australian English throughout this manual, so you will see "organisation" not "organization" (most "-ize" words are spelled with "-ise"), "colour" not "color", "grey" not "gray", and the like. Our authority is the *Macquarie Dictionary*, 3rd edition.



## Copyright

---

The software described in this document is the property of Fractal Technologies Pty Ltd and is furnished under a license agreement. The software may be used or copied only in accordance with the terms of this agreement. Except as permitted by such license, no part of this document may be edited, copied or reproduced without the written permission of Fractal Technologies.

Information in this document is subject to change without notice. Fractal Technologies will not accept any liability arising from the use of the software or any other software product mentioned in this document, nor for any technical or editorial errors or omissions made in this document.

FracSIS is a trademark of Fractal Technologies.

Other brands and their products are trademarks or registered trademarks of their respective holders and should be noted as such. Trademarked names are used editorially, to the benefit of the trademark owner, with no intent to infringe on the trademark. The mention of any other computer software product in this document does not imply endorsement of such product by Fractal Technologies.

The FracSIS product includes software developed by the Apache Software Foundation (<http://www.apache.org>). Portions of FracSIS were developed in cooperation with the CSIRO Glass Earth Project (<http://www.glassearth.com>).





## SECTION 2

# Installation

## In This Section

---

|                                                 |    |
|-------------------------------------------------|----|
| Installation: Introduction .....                | 6  |
| Prerequisites .....                             | 10 |
| Getting started.....                            | 12 |
| Licensing your FracSIS software .....           | 15 |
| Upgrading your database from v3.x or v4.x ..... | 22 |
| Troubleshooting installation issues .....       | 23 |



## Installation: Introduction

---

This document details the installation and licensing of the FracSIS 5.x product suite and ObjectStore in both stand-alone and networked environments.

The FracSIS products are: Professional, Explorer and Reader.

|                             |                                                                                                                                                                                                                                                                                                                                |
|-----------------------------|--------------------------------------------------------------------------------------------------------------------------------------------------------------------------------------------------------------------------------------------------------------------------------------------------------------------------------|
| <b>FracSIS Professional</b> | FracSIS Professional is for consultants creating and distributing data to external clients and for dedicated data managers. FracSIS Professional offers the complete suite of data management and visualisation features.                                                                                                      |
| <b>FracSIS Explorer</b>     | FracSIS Explorer is the tool of choice for geologists and engineers who need the full visualisation and image and data output abilities of FracSIS Professional, but do not need to create and manage databases. Includes movie creation and web export capabilities to allow full access to project data.                     |
| <b>FracSIS Reader</b>       | FracSIS Reader is the visualisation-only environment. Perfect for distributing project information to clients, contractors, and management, FracSIS Reader allows people to view data in an interactive 3D environment. Clients can view attributes, use visualisation tools, and export data, without modifying the database. |

## Network environment

---

FracSIS can be networked across an organisation.

A sample configuration could include:

### Database server

- Stores the FracSIS databases, but doesn't run any FracSIS products.
- ObjectStore is installed on it.
- Must be accessible to all FracSIS users on the network.

### License server/computer

- Stores the FracSIS license information, but doesn't run any FracSIS products.



- Must be accessible to all FracSIS users on the network.
- Can be the same computer as the database server.

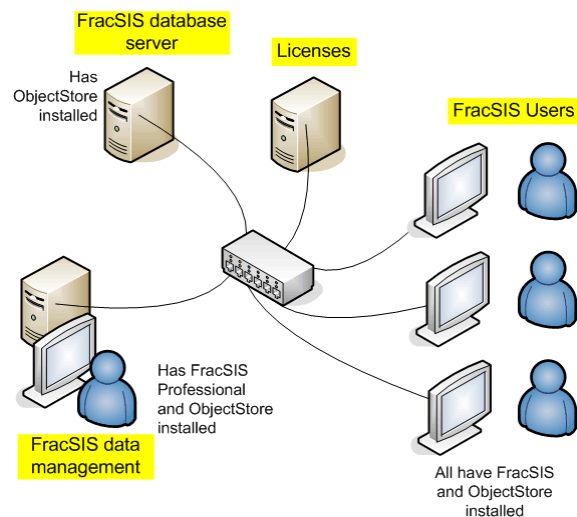
### Database management computer

- Runs the database management functions in FracSIS Professional.
- FracSIS Professional and ObjectStore are installed on it.
- Must be connected to the database server through the network for upload and download of data.
- Must be connected to the license server/computer through the network whenever FracSIS is run; FracSIS checks for an available and valid license before and during running.

### FracSIS user (client) computers

- FracSIS product and ObjectStore are installed on *each* client computer.
- Must be connected to the database server through the network so that the user can access the FracSIS data.
- Must be connected to the license server/computer through the network whenever FracSIS is run; FracSIS checks for an available and valid license before and during running.

For example,



## FracSIS clients

Any computer that is to be used to run a FracSIS product is considered to be a FracSIS client.



Both FracSIS 5.1 and Object Store must be installed on each FracSIS client computer; you will be prompted to install ObjectStore as part of the FracSIS installation.

## **FracSIS database servers**

---

In a networked environment, some or all of the FracSIS databases are located on central servers for shared access between a number of FracSIS clients. These central servers are known as the FracSIS database servers.

A FracSIS database server only stores the FracSIS database files and the ObjectStore Database Server process which controls them. ObjectStore controls all access to the FracSIS databases located on its host computer, providing consistency and data integrity within those databases. ObjectStore must be installed on the FracSIS database server.

To only install ObjectStore on the database server:

- 1 Navigate to the ObjectStore folder on the FracSIS 5.x Installation CD.
- 2 Run **setup.exe**.
- 3 Follow the steps under Installing ObjectStore (page 13).



While the FracSIS product software can be installed on this computer, it is optional; typically, a networked organisation would not install the software on the same computer as the central database files.

---



We recommend that your Database Administrator reads the *Managing FracSIS Databases* document (available from the **DocoWhite Papers** subfolder of your FracSIS 5.x Installation CD). This document contains important information for correctly managing FracSIS databases and using ObjectStore utilities.

---

## **Stand-alone environment**

---

FracSIS can be installed on a single computer separate from any network; for example, for consultants, or those trialling the software.

- FracSIS product, ObjectStore, and the FracSIS database are all installed on the computer.



- License checking is based on the HostID of the computer, so FracSIS will only work on that computer.

For example,



**Stand-alone**

Has FracSIS and ObjectStore installed; HostID applies to this computer only



## Prerequisites

### System requirements for FracSIS 5.x

For any computer running FracSIS (other than those that are used only for database file storage (page 11) or to manage database (page 11) functions such as importing), the following base system requirements must be met.

| Item             | Minimal                                                              | Optimal                                          |
|------------------|----------------------------------------------------------------------|--------------------------------------------------|
| Computer (CPU)   | Pentium IV with 1.7 GHz+                                             | Pentium IV+ with 3 GHz+                          |
| Memory           | 512Mb RAM                                                            | 1Gb+ RAM                                         |
| Graphics Card**  | 3D Graphics Card with 64Mb+ memory and OpenGL 1.3 (or later) support | 256Mb+ memory with OpenGL 1.5 (or later) support |
| Operating System | Windows 2000 (with SP1) OR Windows XP (with SP2)                     |                                                  |
| Peripherals      | CD-ROM, 3-button mouse                                               |                                                  |



#### Graphics Cards

The OpenGL drivers for graphics cards must be reliable. We recommend video cards such as:

- nVidia GeForce range (FX5950 or higher)
- ATI range (such as ATI Radeon 9800Pro or higher)
- other high-quality professional OpenGL cards (such as FireGL X1, WildCat, or Quadro FX1100).

Extra memory enables better image rendering. This is particularly important when working with textures, which consume a lot of memory. Extra memory also allows for higher resolution.

We strongly recommend these higher-level graphics cards as the extra hardware features make light work of very large and complex data sets.



## Prerequisites: FracSIS database server

---

- **Accessibility:** Computers that store FracSIS databases must be accessible through the Local Area Network to all FracSIS database users.
- **Disk storage and processing ability:** Depends on the expected volume of data and the amount of traffic from FracSIS users.
- **CPU and Memory:** Same as the base system requirements (page 10).
- **Graphics card:** Not applicable if this server is only used to store the FracSIS databases; however, if the server is also used to run FracSIS products, then the graphics card must be the same as the base system requirements.

Contact Fractal Technologies Technical Support at [support@fractaltechnologies.com](mailto:support@fractaltechnologies.com) if you have any questions about your server requirements.

## Prerequisites: FracSIS data management only

---

Some sites may choose to run database management functions such as importing and exporting from a separate computer to prevent overloading the main FracSIS database server. If so, the following requirements must be met for this computer:

- **Accessibility:** Must be connected through the Local Area Network to the FracSIS database storage server.
- **Disk storage:** Depends on the expected volume of data; faster disk speed and performance are also important.
- **CPU and Memory:** At least the same as the base system requirements (page 10); importing, exporting and reorganising data are memory-intensive operations.
- **Graphics card:** Not applicable if this computer is only used to manage the FracSIS data; however, if the computer is also used to run FracSIS products, then the graphics card must be the same as the base system requirements.

Contact Fractal Technologies Technical Support at [support@fractaltechnologies.com](mailto:support@fractaltechnologies.com) if you have any questions about these requirements.



## Getting started

---

On all computers or servers where FracSIS, ObjectStore, or both are to be installed:

- 1 Log in to Windows as a user with administrator privileges.  
If you don't know if your login ID has such privileges, contact your local system administrator.
- 2 Stop and close all Windows applications.
- 3 Insert the FracSIS 5.x Installation CD into the CD drive. The Installer splash screen is displayed with installation instructions.

You are now ready to begin the installation...



### Uninstalling previous versions

If a previous version of a FracSIS product is installed on this computer, you will be prompted to uninstall both FracSIS and ObjectStore. Follow the **Uninstall** Wizard instructions to uninstall FracSIS then ObjectStore before installing the new FracSIS (page 12).

---

## Installing FracSIS

---

You must install FracSIS on all client computers. In most cases, FracSIS is not installed on servers.

- 1 Click **Install FracSIS** on the Installation CD's splash screen.
- 2 Select the location where you want FracSIS installed on your hard disk.

We recommend that you use the default location, **C:\Fractal Technologies\FracSIS5.x** (where **x** is the version number).

- 3 Click **Next**.
- 4 Select the FracSIS product to install. Only choose the product you have purchased a license for.
- 5 Click **Next**.
- 6 Select the FracSIS 5.x Translator components to install.

There are several Translator (or Importer) plug-in extensions that are used to import data from various formats into FracSIS 5.x. All components are selected by default; we recommend that you keep this setting as these components use very little disk space.



- 7 Click **Next**.
- 8 Select the Windows Program Manager group under where your FracSIS shortcuts will be listed.
- 9 Click **Next**.
- 10 Confirm your installation settings.
- 11 Click **Next**.  
The installation starts; all required files for your licensed FracSIS product will be installed to the hard disk.
- 12 When the installation is complete, click **Finish**.
- 13 You are prompted to install ObjectStore (page 13).

## Installing ObjectStore

---

ObjectStore v6.1sp2 (Version 6.1, Service Pack 2) **MUST** be installed on all computers and servers that will run any FracSIS product or store the database files used by FracSIS; it provides the underlying database support and FracSIS cannot run without it.



DO NOT blindly follow the installation Wizard! There are some critical selection options in steps 7 and 16 which, if not chosen correctly, will mean that FracSIS will not run.

- 1 When the FracSIS installation has finished, you will be prompted to install ObjectStore 6.1 service pack 2.
- 2 Click **Yes** to install ObjectStore 6.1. The ObjectStore Installation Wizard is displayed.
- 3 On the User Information screen of the installation Wizard, type the client name in the **Name** field and the company name in the **Company** field.
- 4 Click **Next**.
- 5 In the Destination Folder field, either select the default location to install ObjectStore, or browse to locate another drive and folder manually.
- 6 Click **Next**.
- 7 **NOTE: THIS IS IMPORTANT!**  
Under the installation options, click **Custom**.
- 8 From the Components list, select the **C++ Interface** option and the **ObjectStore DBMS** option.
- 9 Disable all other options in the Components list.
- 10 Click **Next**.
- 11 Click **Both client and server**.



**12** Click **Next**.

**13** Select a program folders directory. *We recommend that you use the default.*

**14** Click **Next**.

**15** Click **Finish** when you have made all your selections; the installation starts.

**16** During the installation you will be asked some questions:

| Question                                                                                                                                                                                                                      | Response   |
|-------------------------------------------------------------------------------------------------------------------------------------------------------------------------------------------------------------------------------|------------|
| Would you like to change the parameters for your ObjectStore server?                                                                                                                                                          | <b>No</b>  |
| Would you like to create RAWFS partitions?                                                                                                                                                                                    | <b>No</b>  |
| <b>NOTE: THIS IS IMPORTANT!</b><br>Initialise ObjectStore server log file?<br>(Once you have answered <b>Yes</b> , select the default location to store the log file, or browse to locate another drive and folder manually.) | <b>Yes</b> |
| Would you like the ObjectStore server to start automatically?                                                                                                                                                                 | <b>Yes</b> |
| Would you like start these services now?                                                                                                                                                                                      | <b>Yes</b> |

**17** Click **Finish**.

**18** You are asked to restart the computer. Click **Yes** to restart.

The installation of FracSIS and ObjectStore is not complete until the computer has been restarted. The ObjectStore Server and Cache Manager services will automatically be restarted when the computer is restarted.



## Licensing your FracSIS software

---



If you have already received your FracSIS license file, either for a trial/demo license or for a permanent license, you can skip this section.

---



Licenses issued for previous versions of FracSIS are not valid for the current version of FracSIS - you will need to upgrade your licenses. If you have an earlier version and have not yet received a license file, contact Technical Support at [support@fractaltechnologies.com](mailto:support@fractaltechnologies.com).

If you are upgrading from FracSIS 3.x, refer to the instructions contained in document *FracSIS License Installation.html*, which is found in the **Networked License Server\fractal\_license\_server** subfolder of your FracSIS 5.x Installation CD. This document covers the steps required to upgrade your old license to the new license issued for FracSIS 5.x.

---

You will need a valid license to operate your FracSIS software. To generate such licenses, Technical Support needs to know:

- The types of licenses you require (stand-alone [node-locked], or networked [floating]).
- The HostID values of the computers where the licenses will be used.
- The maximum borrowed period required (for network licenses only).

Once you have emailed your HostID to Fractal Technologies Technical Support, you will get a reply email with your license file.

FracSIS licenses are either deployed as stand-alone licenses or as a 'floating pool' of licenses on a networked License server or computer.

### FracSIS licenses: Stand-alone environment

In a stand-alone installation, your FracSIS license will ALWAYS be locked to a particular computer; that is, the license will only function on that computer. To generate the license, Technical Support needs to know the HostID of the computer where FracSIS is installed. For more information, see Finding the HostID of the computer (page 16).



### **FracSIS licenses: Network environment**

In the networked environment, a License Server process is set up on a nominated License Server computer. This process monitors a pool of purchased licenses. Any number of FracSIS clients can use licenses from the pool, up to the maximum number of available licenses. For example, if your organisation has purchased 10 FracSIS licenses and you have FracSIS installed on 25 client computers, only 10 of those client computers can run FracSIS simultaneously. When a user stops running FracSIS, their license is released back into the pool for use by another client computer.

To generate the licenses, Technical Support needs to know:

- The HostID and hostname of the nominated License Server computer.
- The maximum borrowed period required.

### **Trial license**

If you require a trial license, you do not need to supply Technical Support with any details of the computers where the licenses will be used.

## **Finding the HostID of the computer**

---

On Windows platforms, the HostID is taken as the MAC (Media Access Control) Address of the network card (also known as the Ethernet Address).

There are three ways you can get this HostID - Methods 1 and 3 are only available after you have installed FracSIS; Method 2 can be used before you install FracSIS.

Once you have emailed your HostID and other required license details (page 15) to Fractal Technologies Technical Support, you will get a reply email with your license file.

### **Method 1 (RECOMMENDED)**

This is the most accurate method of getting the HostID, so we recommend that you use this method EXCEPT where you have a data server that won't have FracSIS installed on it (use Method 2).

FracSIS must be installed on the computer to use this method. If FracSIS is not yet installed, use Method 2.



- 1 From the **Start** menu, select **All Programs > Fractal Technologies > Tools > FLEXlm Host ID**. A command window is displayed with the following:

```
lmhostid - Copyright (C) 1989-2002 Globetrotter Software,
Inc.
The FLEXlm host ID of this machine is "xxxxxxxxxxxxx"
The FLEXlm host ID of this machine has been written to
C:\lmhostid.txt
Please email C:\lmhostid.txt to Technical Support
Press any key to continue . . .
```

The text represented by **xxxxxxxxxxxxx** is your FLEXlm Host ID. This text has been added to a new file (lmhostid.txt) located in the root at C: drive of the computer.

- 2 Press **ENTER** to close the command window.
- 3 Find the file (at C:\lmhostid.txt), and attach it to a new email.
- 4 Send the email with the attached file to Fractal Technologies Technical Support at support@fractaltechnologies.com.

## Method 2

Use this method if you haven't installed FracSIS yet, or you won't be installing it on this computer (as is the case with a data server).

- 1 Open a Command window (from the **Start** menu, select **Run**, type `cmd`, then press **ENTER**).
- 2 Type `ipconfig /all>c:\hostid.txt`
- 3 Press **ENTER**, then type `exit` to close the Command window.
- 4 Go to the C: drive and locate the **hostid.txt** file just created.
- 5 Right-click on it, then select **Send To > Mail Recipient**.
- 6 When your email application opens, send an email with the attached **hostid.txt** file to Technical Support at support@fractaltechnologies.com.

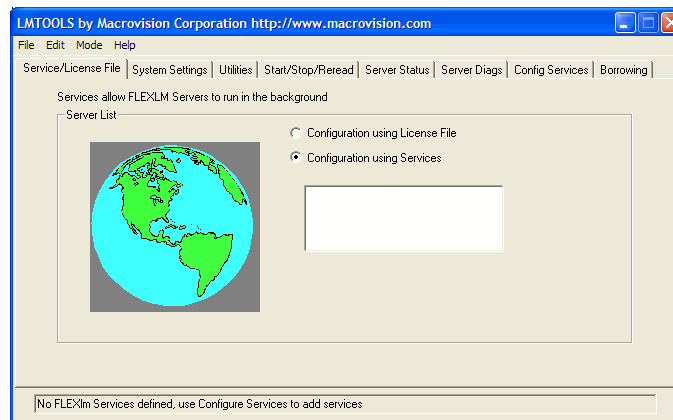
## Method 3

FracSIS must be installed on the computer to use this method. If FracSIS is not yet installed, either:

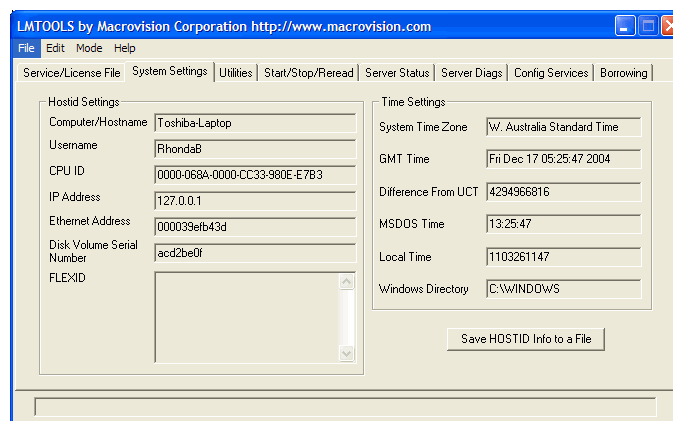
- Use Method 2
- OR -
- Copy the **lmtools.exe** file from the installation CD (under **Networked License Server\fractal\_license\_server**) to the local C: drive, then run it.



- 1 From the **Start** menu, select **All Programs > Fractal Technologies > Tools > Licensing Tool**. The LM tools window is displayed.



- 2 Click the **System Settings** tab.



- 3 The **Ethernet Address** field contains your FLEXlm Host ID. Copy the value in this field.
- 4 Open a new email, then paste the value into it.
- 5 Send the email to Technical Support at [support@fractaltechnologies.com](mailto:support@fractaltechnologies.com).

## Installing a stand-alone license

Once you have emailed your HostID and any other relevant details to Fractal Technologies Technical Support, you will get a reply email with your license file.

- 1 Save the license file from Technical Support to a directory on your hard disk. We suggest you save it to **C:\Fractal Licenses**.
- 2 The first time you start a FracSIS application, you will be prompted by the FLEXlm License Finder to specify the location of your license. Select the **Specify the License File** option, then click **Next**.



- 3 Browse to the license file you saved to your hard disk in step 1, and select it.
- 4 FracSIS will start - you will not have to specify the location of the license file again.



If the FLEXIm License Finder does not open, a previous version of FracSIS may be installed on your machine. You can force FracSIS to allow you to respecify the license location by running the Clear License tool supplied with FracSIS. To do this, shut down any open FracSIS windows, select **Start > All Programs > Fractal Technologies > Tools > Clear License**, then restart FracSIS.

---

## Installing a 'floating pool' of licenses

---

- 1 Once you have emailed your HostID and any other relevant details to Fractal Technologies Technical Support, you will get a reply email with your license file.
- 2 Follow the instructions for installing a Floating License Server. These instructions are in the *FracSIS License Installation.html* file found in the **Networked License Server\fractal\_license\_server** subfolder of your FracSIS 5.x Installation CD.

If you have any problems or queries regarding license installation, contact Technical Support at [support@fractaltechnologies.com](mailto:support@fractaltechnologies.com).

## Fractal dongles

---

A Fractal dongle is a small USB hardware device that connects to a computer and acts as an authentication key for a particular piece of software. When the dongle is present, the FracSIS software will run properly; when it is not, FracSIS won't run. Fractal dongles work in conjunction with FLEXIm licenses.

Several computers can have FracSIS installed and share the one dongle. This means that only one computer can have FracSIS running at any one time. To run FracSIS on another computer, remove the dongle from the first and connect it to the second computer. All computers that are to use the dongle must have the drivers and license key installed on them, as well as the FracSIS software.



## Best practises

Dongles are valuable objects. We recommend that you insure them for the full replacement value of the software they enable.

## Replacement

We will only replace a dongle if it malfunctions. (Loss or damage is your responsibility; we suggest you insure against such events.)

A malfunctioning dongle must be returned to us. We will test it, and if we confirm that it is faulty, we will replace it at no cost to you. We will issue you a temporary license until you receive your replacement.

If no malfunction is found, you will be charged a fee that covers administration, testing, and shipping and handling, and the cost of a new dongle (if required).

## Installing a dongle

---

### Requirements

For each computer that is to use the dongle:

- FracSIS must be installed
- The **usbkey.exe** file must be available
- The FracSIS license file for the dongle must be available (you get this from [support@fractaltechnologies.com](mailto:support@fractaltechnologies.com))

### Step 1. Install the drivers

- 1 Double-click on the **usbkey.exe** file to run it.
- 2 The first stage unpacks the file. Click **OK** on the success message.
- 3 The second stage installs the drivers required to run the dongle. This takes about a minute.
- 4 Click **OK** on the final success message (the message with "Aladdin" in the title bar).

### Step 2. Insert the dongle

- Insert the dongle into an available USB port on the computer.  
The dongle must remain in this port for FracSIS to work. As soon as it is removed, FracSIS will stop running.



### Step 3. Install the license file

- 1 Copy the license file from Fractal Technologies Support to the computer. Suggestion: **C:\Fractal License**.
- 2 Run FracSIS. The splash screen displays, then you get a message about selecting a license.
- 3 Choose the **Select a License File** option, then click **Browse**.
- 4 Navigate to where you installed the license file, select it, then click **Open**.
- 5 Click **OK** on the message that displays when the license file is successfully installed.
- 6 FracSIS will now start.

Repeat the above steps for any other computer that is to share this dongle.



## Upgrading your database from v3.x or v4.x

---



FracSIS 3.x and 4.x databases must be upgraded to version 5.x before FracSIS 5.x applications can open them.

WE RECOMMEND THAT YOU BACK UP YOUR DATABASES BEFORE UPGRADING THEM TO FracSIS 5.x.

---

When you open a FracSIS 3.x or 4.x database using FracSIS 5.x, you are prompted to upgrade the database:

- If you have already backed up this database, click **Yes** to upgrade the database to FracSIS 5.x.
- If not, click **No** to cancel the upgrade, then contact your FracSIS Administrator or System Administrator to make sure that the backup has been scheduled.

Once the backup is completed, open the earlier database and click **Yes** to upgrade it.

---




Once FracSIS databases have been upgraded to version 5.x, you cannot open them using older versions of FracSIS. For this reason, we recommend that all users in your group or organisation upgrade to FracSIS 5.x at the same time.

---



## Troubleshooting installation issues

| Problem                                                                                                                                                                                                                                                                                                                                                                                                                                                      | Solution                                                                                                                                                                                                                                                                                                                                                                                                                                                                                                                                                                                                                             |
|--------------------------------------------------------------------------------------------------------------------------------------------------------------------------------------------------------------------------------------------------------------------------------------------------------------------------------------------------------------------------------------------------------------------------------------------------------------|--------------------------------------------------------------------------------------------------------------------------------------------------------------------------------------------------------------------------------------------------------------------------------------------------------------------------------------------------------------------------------------------------------------------------------------------------------------------------------------------------------------------------------------------------------------------------------------------------------------------------------------|
| <p>I get an "Unable to locate DLL" message when I try to open FracSIS like: "The dynamic link library O6CLIEN1.dll could not be found...."</p>                                                                                                                                                                                                                                                                                                               | <p>You have installed FracSIS but have either not installed ObjectStore, or have not installed it correctly. Follow the ObjectStore installation instructions very carefully - do not blindly follow the installation wizard. You may need to uninstall ObjectStore and FracSIS and start again.</p>                                                                                                                                                                                                                                                                                                                                 |
| <p>I get a "Database Connect Error" message (see below) when I try to run FracSIS from the workstation and create a new database. I checked that the service is running on the server, and it appears to be OK.</p>                                                                                                                                                                                                                                          | <p>The message indicates that there is no Database Server running on the &lt;name of server&gt; machine.</p> <ul style="list-style-type: none"> <li>▪ Check that ObjectStore is installed on this machine. If it is not installed, install it.</li> <li>▪ If ObjectStore is installed, the Server log file may not have been initialised during the installation process. If this was not done, the server won't start. The only solution is to reinstall ObjectStore, selecting the <b>Set Up Server</b> option and making sure that you select <b>Yes</b> to reinitialise the log file during the installation process.</li> </ul> |
|  |                                                                                                                                                                                                                                                                                                                                                                                                                                                                                                                                                                                                                                      |





# Index

## C

clients.....7

## D

databases .....8, 11, 22

dongles .....19, 20

## E

errors ..... See troubleshooting

## F

floating license .....19

## G

graphics cards .....10

## H

HostID.....16

## I

installing..... 12, 13, 18, 19, 20

## L

licenses.....15, 18, 19

## M

MAC address ..... See HostID

## N

networks .....6

## O

ObjectStore.....7, 8, 13

## P

prerequisites .....10, 11

problems ..... See troubleshooting

## R

requirements..... See system requirements

## S

servers .....8, 11

stand-alone .....8, 18

system requirements .....10

## T

troubleshooting ..... 23

## U

uninstalling ..... 12

upgrading ..... 22

